



6/32 Morwick Street Strathfield NSW

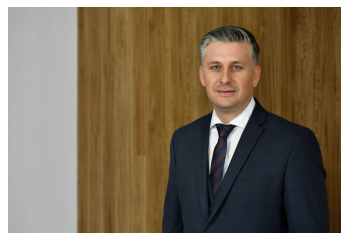
2 🛏 1 🚿 1 🚗

Set at the rear of a boutique complex of just nine, this full brick unit has been updated for easy contemporary living in a convenient central location. Strathfield Plaza, local elite schooling, parks & the train station are all within five minutes walk.

Price : \$ 615,000
View : <https://www.thejoneses.com.au/sale/nsw/inner-west/strathfield/residential/apartment/7241104>

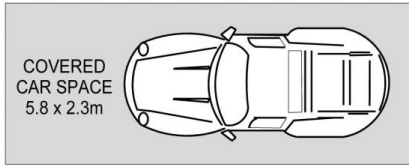
Highlights:

- + First floor, tranquil rear aspect facing Russell St reserve
- + Stylish traditional interiors and quality finishes throughout
- + Light filled living and dining features polished timber flooring
- + Covered full length balcony enjoys lush elevated views
- + Fully renovated kitchen fitted with stainless steel appliances
- + Two good sized light filled bedrooms, oversized windows
- + Combined laundry/bathroom, built-ins, high ceilings
- + Great investment with good growth and rental prospects
- + Walkable to both Strathfield and Burwood amenities
- + Easy access to arterial roads, eateries, cafes and Strathfield

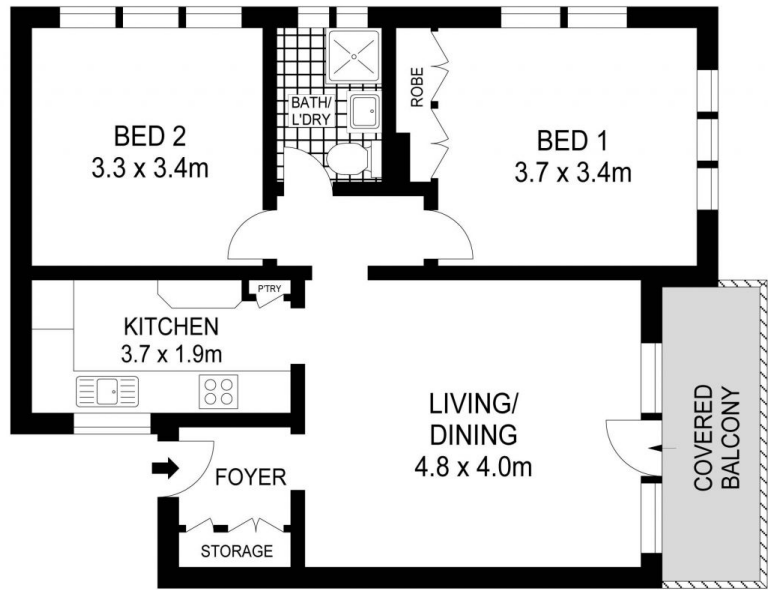


Reece Theedam
8060 5585

Size: 76sqm plus carspace



GROUND LEVEL



LEVEL ONE



Scale in metres. Indicativ only. Dimensions are approximate. All information contained herein is gathered from sources we believe to be reliable. However we cannot guarantee it's accuracy and interested persons should rely on their own enquiries.

APPROX. INT : 65m²



6/32 MORWICK STREET, STRATHFIELD