



29 Stanwell Crescent Ashcroft NSW

3  1  1 

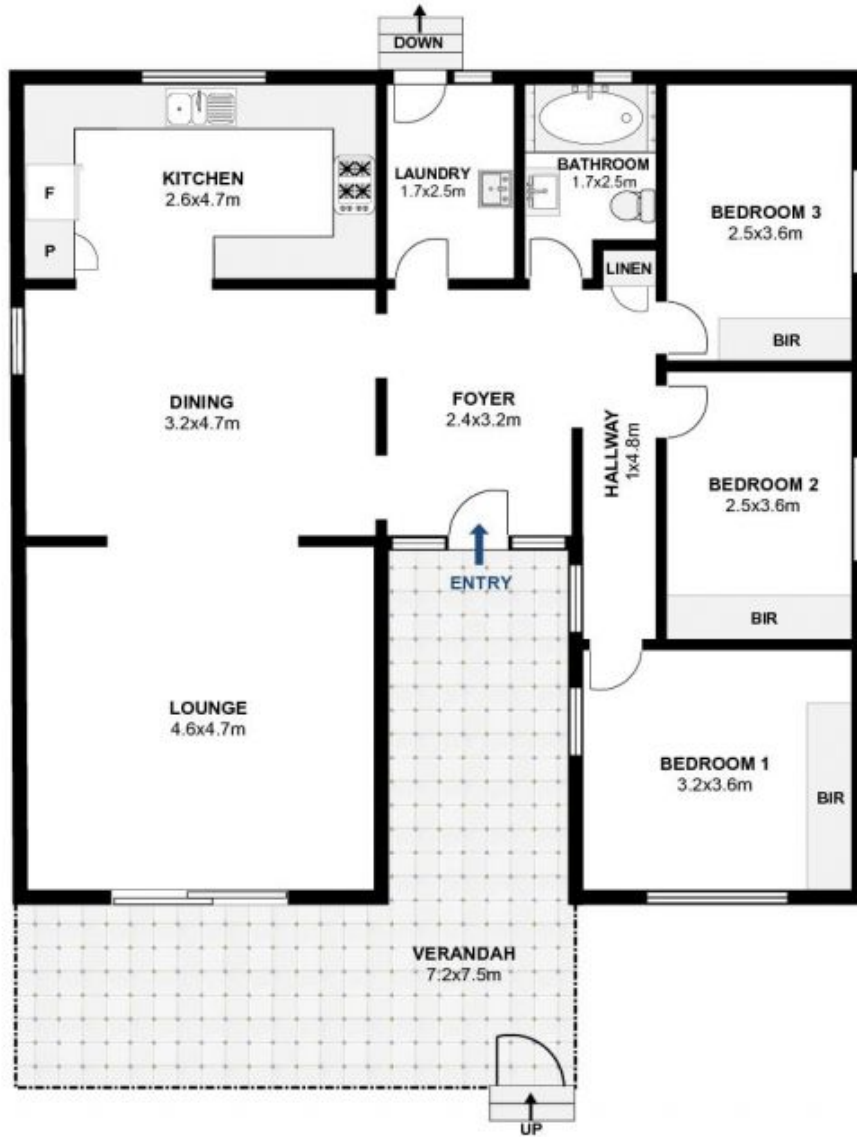
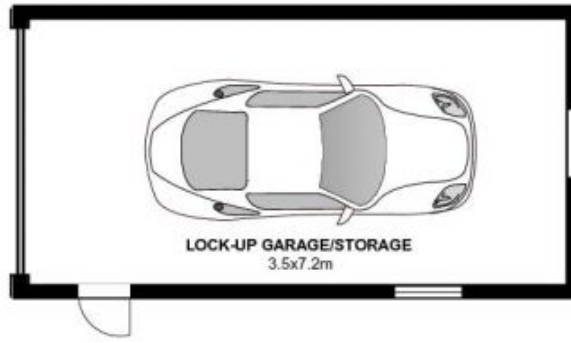
Located in a sought after location, this beautifully presented family home is brimming with natural light throughout and is set on 645sqm with a 15.2 metre frontage. The home presents the perfect indoor/outdoor living, design and entertaining and enjoys a practical floor plan and updated features which investors and families will love.

- Land size 645sqm approx, frontage 15.2 metres
- 3 Generous sized bedrooms
- Spacious kitchen with adjoining formal dining area
- Large living area and separate family room
- Updated bathroom
- Side driveway to rear garage and storage area
- Granny flat potential (subject to council approval)
- R2 Zone
- Nestled in a quiet street just minutes to schools, transport, Liverpool CBD and train station

Land Size : 645 sqm
View : <https://www.thejoneses.com.au/sale/nsw/liverpool-fairfield/ashcroft/residential/house/6181119>



Reece Theedam
8060 5585



29 Stanwell Crescent Ashcroft



Floor plan by DG Life

The following floor plan is shown for presentation purposes only and is not part of any legal document. All measurements and figures are approximate.