






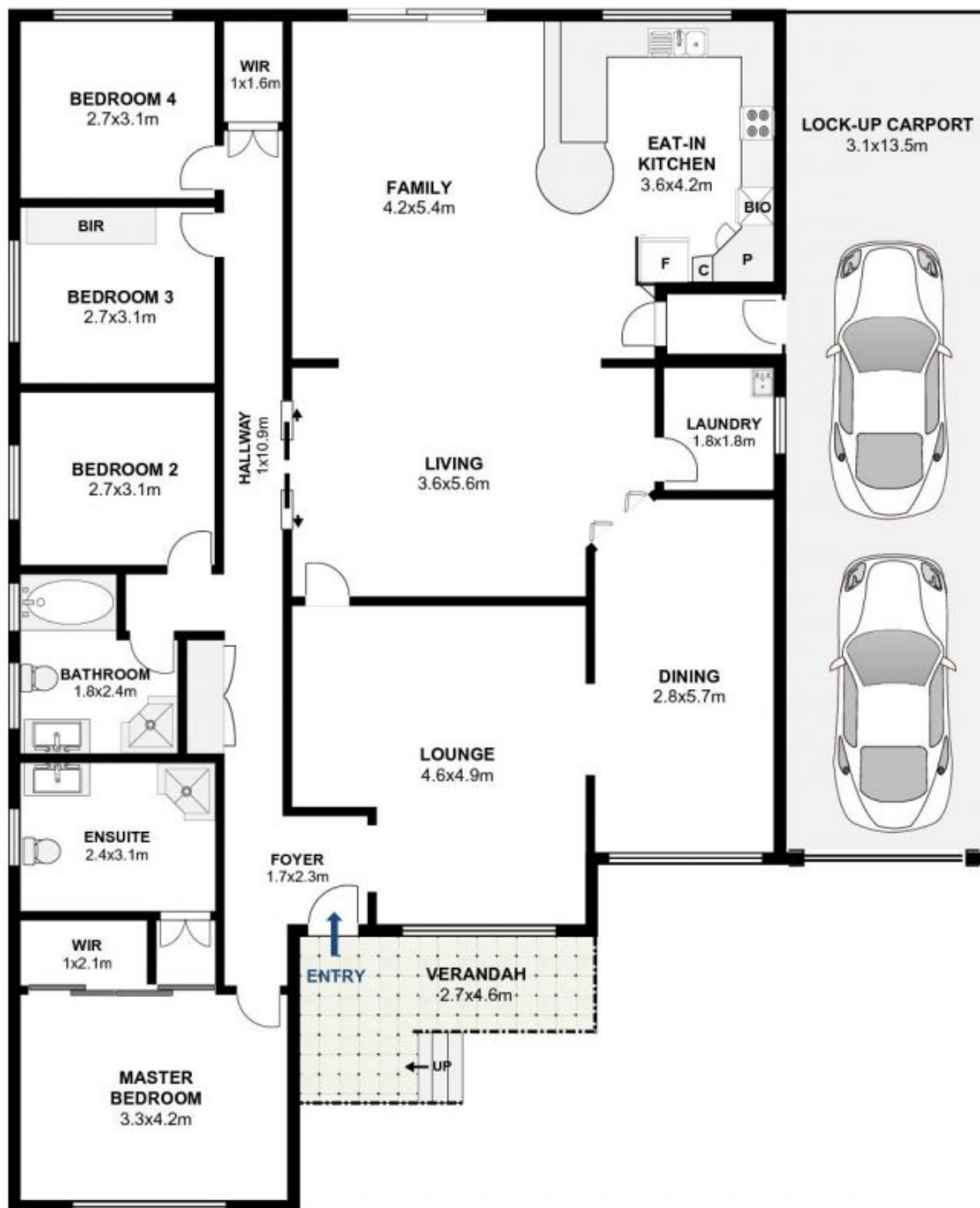
5 Bowtell Ave St Johns Park NSW

4  2  2 

This beautifully maintained brick home offers a unique family lifestyle of excellence and providing an outstanding and highly versatile layout, this immaculately presented family home features impressive modern interiors, quality inclusions and a spacious backyard for the kids to play. Located in a sought after location and minutes away from local shops, schools, parks and transport.

View : <https://www.thejoneses.com.au/sale/nsw/liverpool-fairfield/st-johns-park/residential/house/6181104>

- Four spacious bedrooms, master comes with an modern en suite & built in robe
- Open plan formal and informal living areas
- Large kitchen
- Ducted AC as well as split system
- Updated modern bathroom
- Single lock up garage with access to the backyard
- Spacious backyard for the kids to play and storage shed
- Minutes away from local shops, schools, parks and transport.



5 Bowtell Avenue St Johns Park



Floor plan by DG Life

The following floor plan is shown for presentation purposes only and is not part of any legal document. All measurements and figures are approximate.