

### 29 Pelman Ave Greenacre NSW

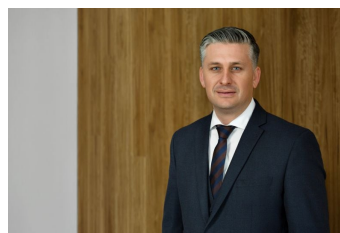
3 2 2

Immaculately maintained and beautifully presented, this newly renovated family residence provides premium inclusions across a wonderfully spacious flowing layout and also features a brand new separate retreat with own entrance. It's nestled in a quiet tree lined street only minutes to local shops, schools, transportation and parks.

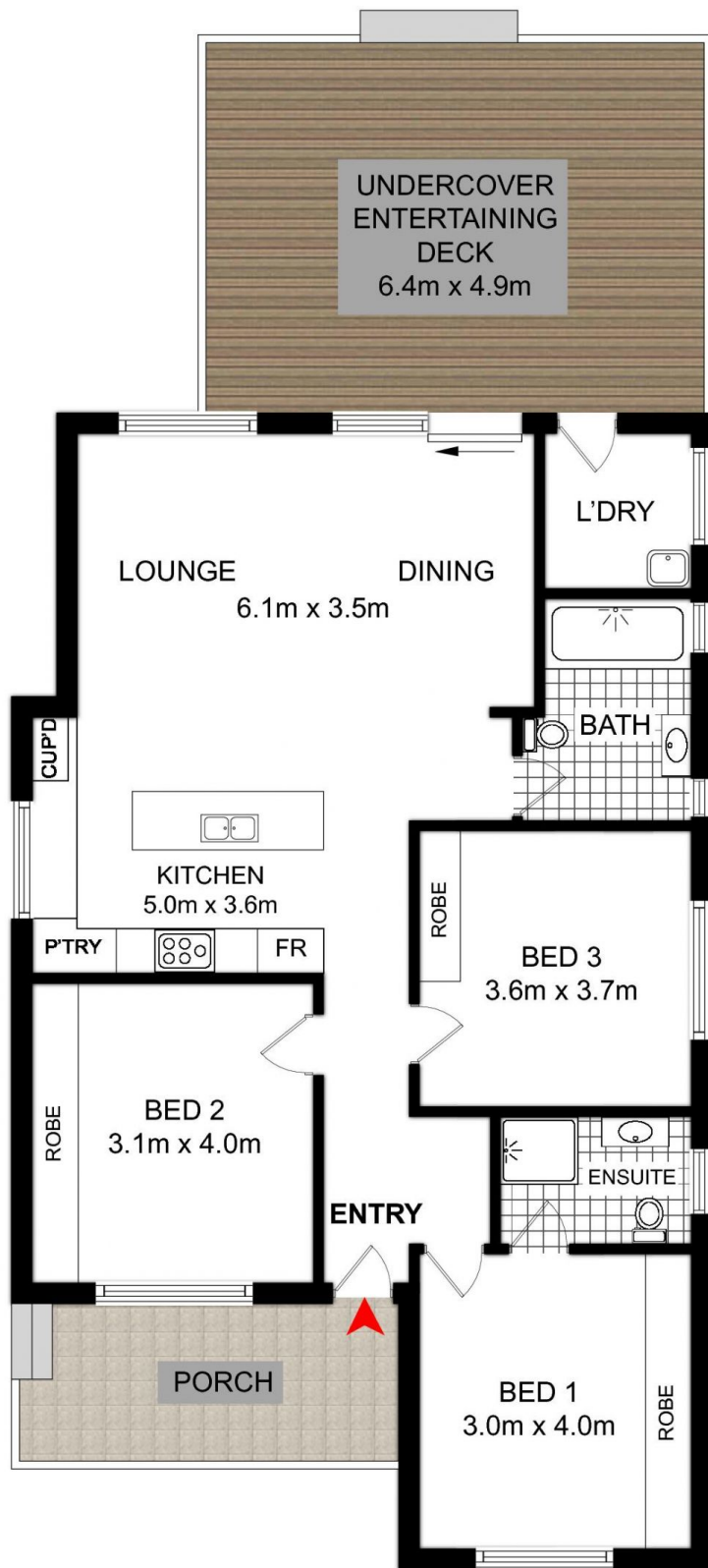
- Three generous sized bedrooms
- Gourmet gas kitchen with free standing island bar
- Large open plan living area and dining area
- Beautifully appointed bathrooms
- Undercover alfresco entertaining area
- Generous size back yard
- Seperate retreat with kitchen and bathroom and lounge area
- Minutes to local shops, schools, transportation and parks

**Land Size** : 520 sqm

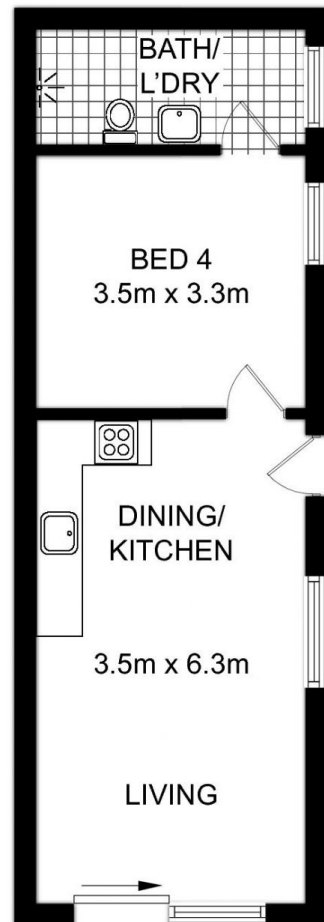
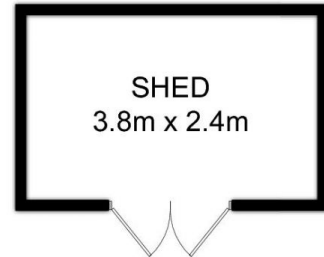
**View** : <https://www.thejoneses.com.au/sale/nsw/canterburybankstown/greenacre/residential/home/6181101>



**Reece Theedam**  
8060 5585



**GROUND FLOOR**



**RETREAT**



DISCLAIMER: THIS IS FOR ILLUSTRATIVE PURPOSES ONLY.  
ALL DIMENSIONS ARE APPROXIMATE AND IT DOES NOT  
CONSTITUTE PART OF ANY LEGAL DOCUMENTS.

**ADDRESS:**

**29 PELMAN AVENUE, GREENACRE**